

Gentile Glas Holloway O'Mahoney & Associates, Inc. Landscape Architects Planners Environmental Consultants

1907 Commerce Lane Suite 101 Jupiter, Florida 33458 561-575-9557 561-575-5260 FAX www.2GHO.com

Site Development Plan Encompass Health Palm Beach Gardens, Florida

Designed: GGG, RBD Drawn: RBD Approved: GGG/EOM/MTB Date: 05/21/21 Job no: 20-0000 Revisions:

LC 0000111

Sheet Title: Site Development Plan

Scale: 1"=40'

Sheet No. SP-1

13-0000

Site Data table with columns for Item and Value. Includes Petition No., Project Name, Existing Future Land Use, Proposed Future Land Use, Existing Zoning, Proposed Zoning, Section - Township - Range, PCN #, Total Site Area, Existing Use.

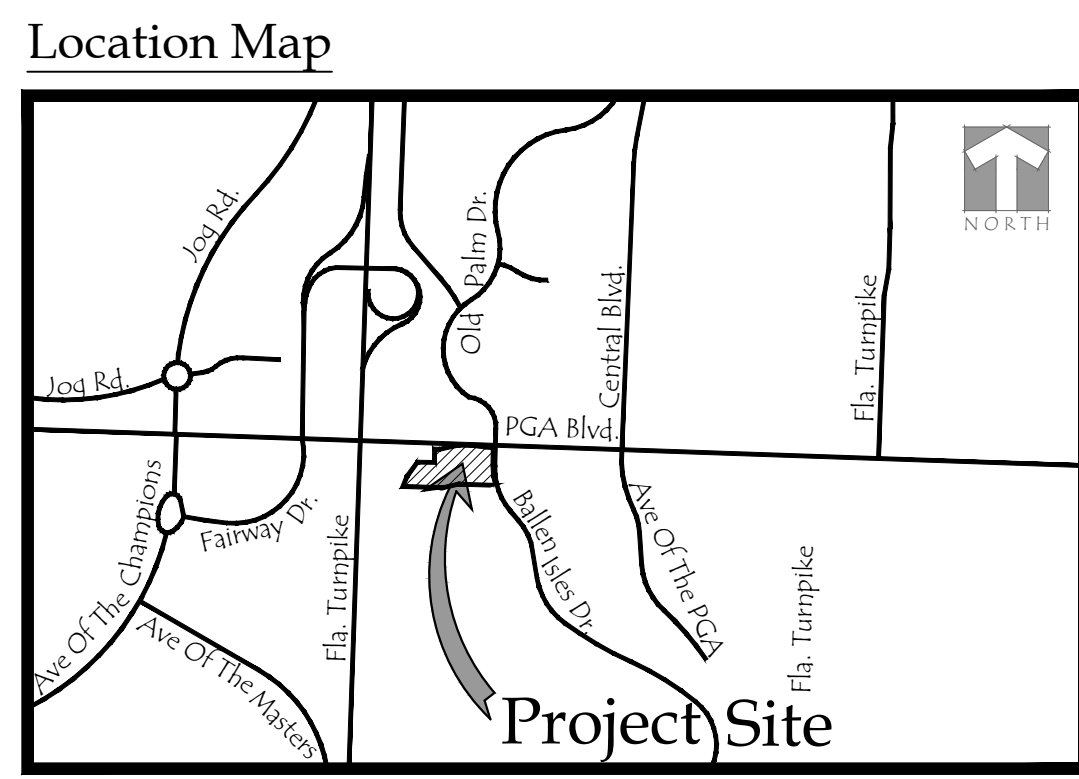
Building Data table with columns for Item and Value. Includes Proposed Use, Phase I, Phase II, Building Height, PUD, P/I.

Building Lot Coverage table with columns for Item and Value. Includes PUD, P/I.

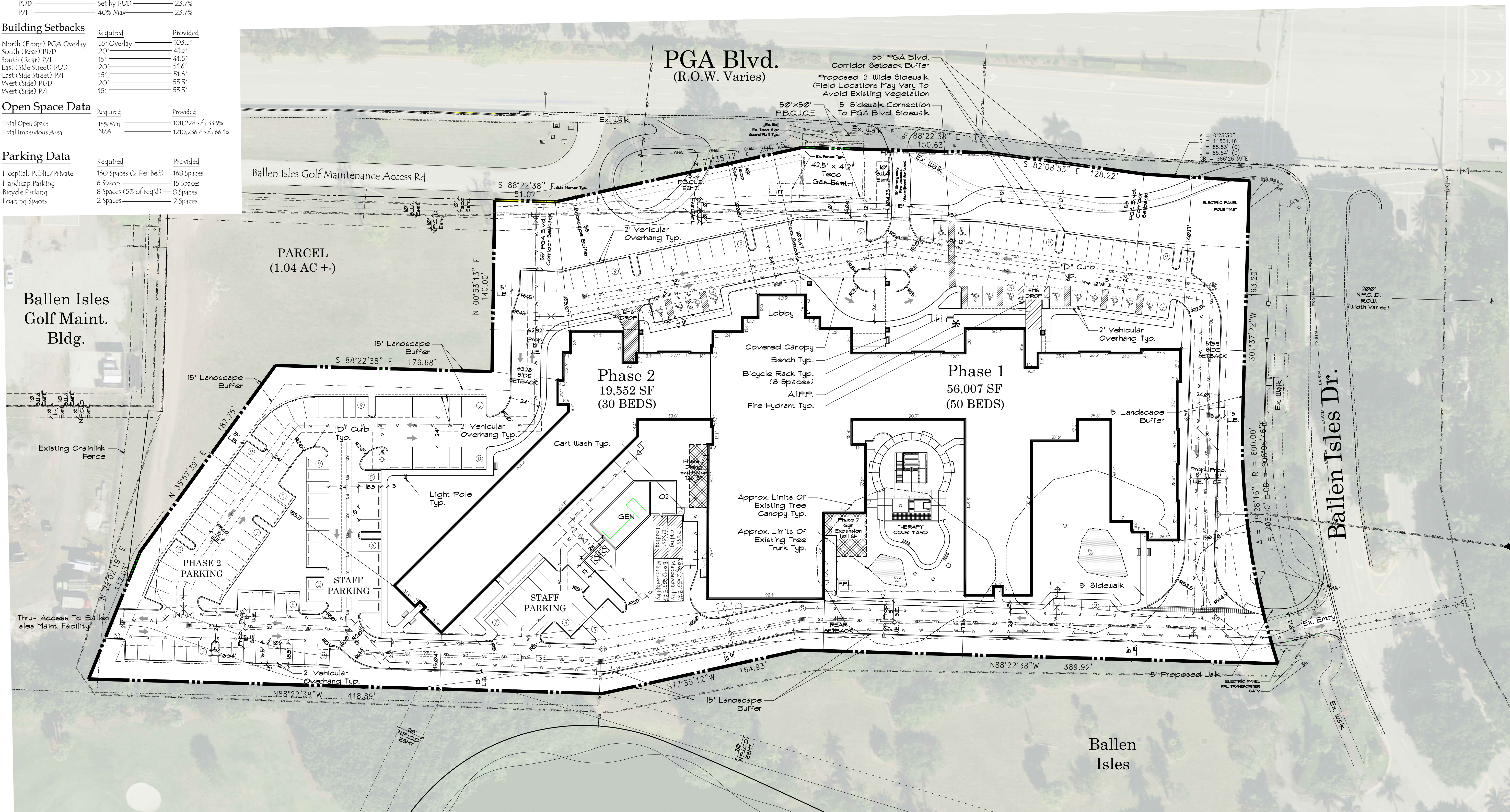
Building Setbacks table with columns for Item, Required, and Provided. Includes North (Front) PGA Overlay, South (Rear) PUD, East (Side Street) P/I, West (Side) P/I.

Open Space Data table with columns for Item, Required, and Provided. Includes Total Open Space, Total Impervious Area.

Parking Data table with columns for Item, Required, and Provided. Includes Hospital, Public/Private, Handicap Parking, Bicycle Parking, Loading Spaces.



General Notes: ALL HANDICAP ACCESSIBLE RAMPS SHALL MEET ALL APPLICABLE LOCAL, REGIONAL, STATE, AND FEDERAL ACCESSIBILITY GUIDELINES AND REGULATIONS. ANY MODIFICATIONS SHALL BE PROVIDED BY THE ENGINEER OF RECORD.



FILE: N:\BALLEN ISLES WEST TO GO\DRAWINGS\CURRENT\NIST SUBMITTALS\ENCOMPASS SITE BASE 05.21.21 SUBMITTED.DWG PLOTTED: 5/20/21 AT 12:22PM BY: BEN XREFS