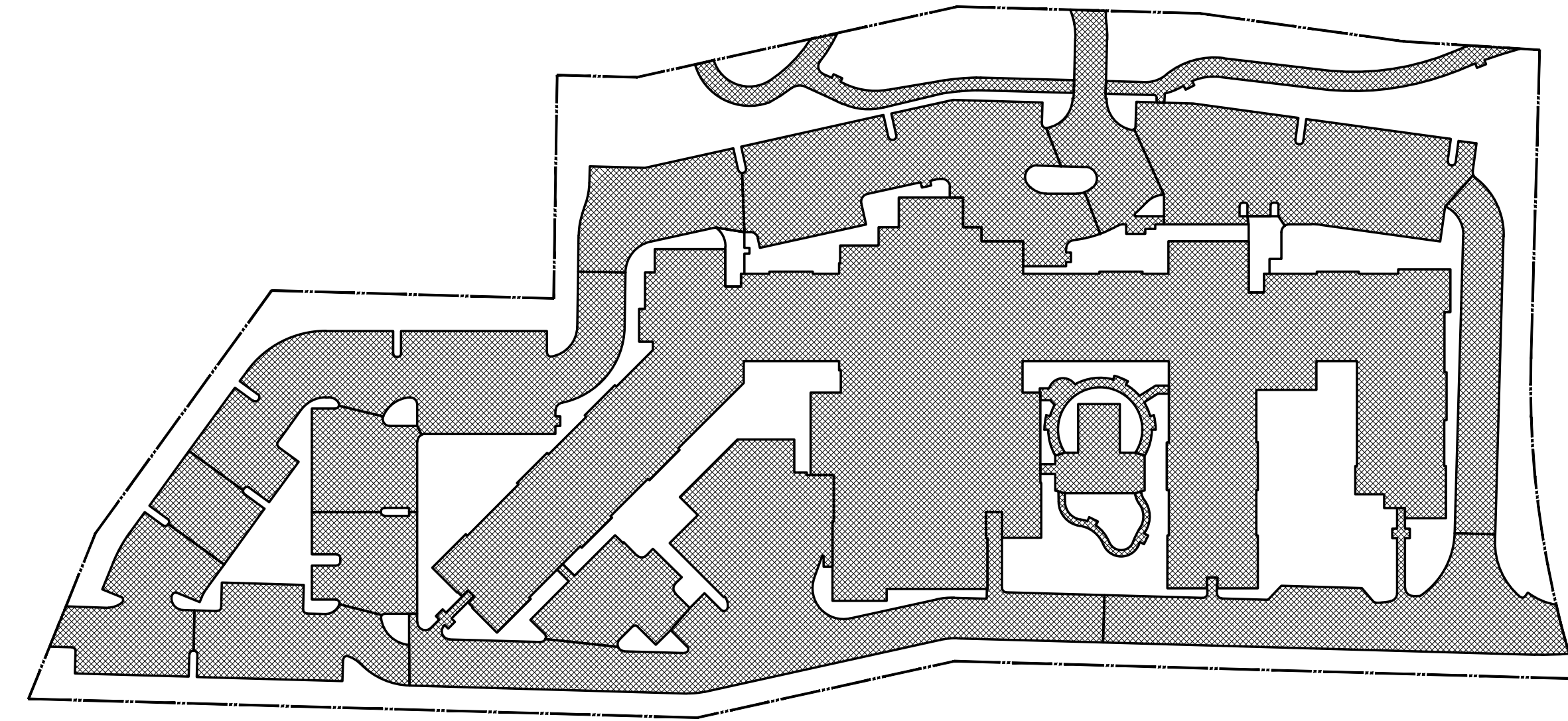
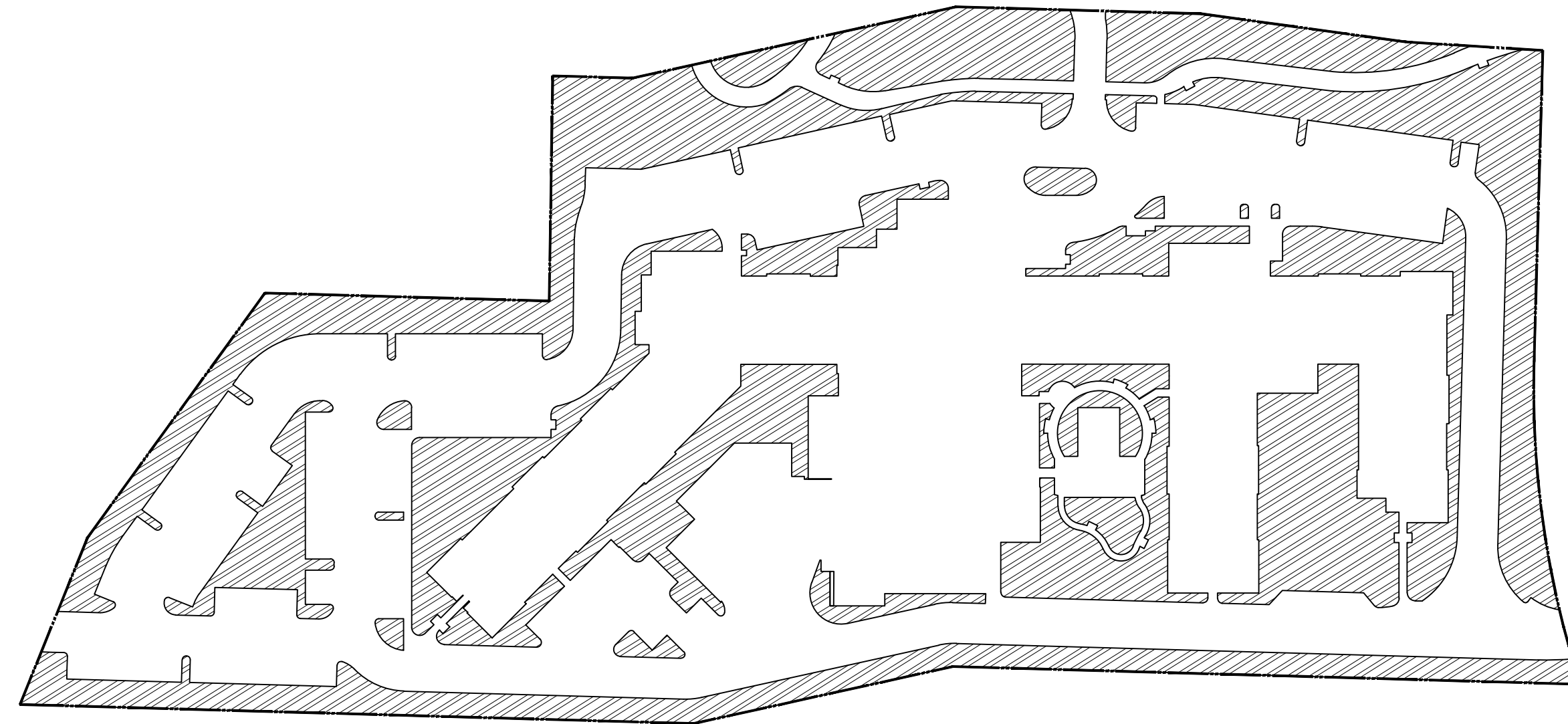


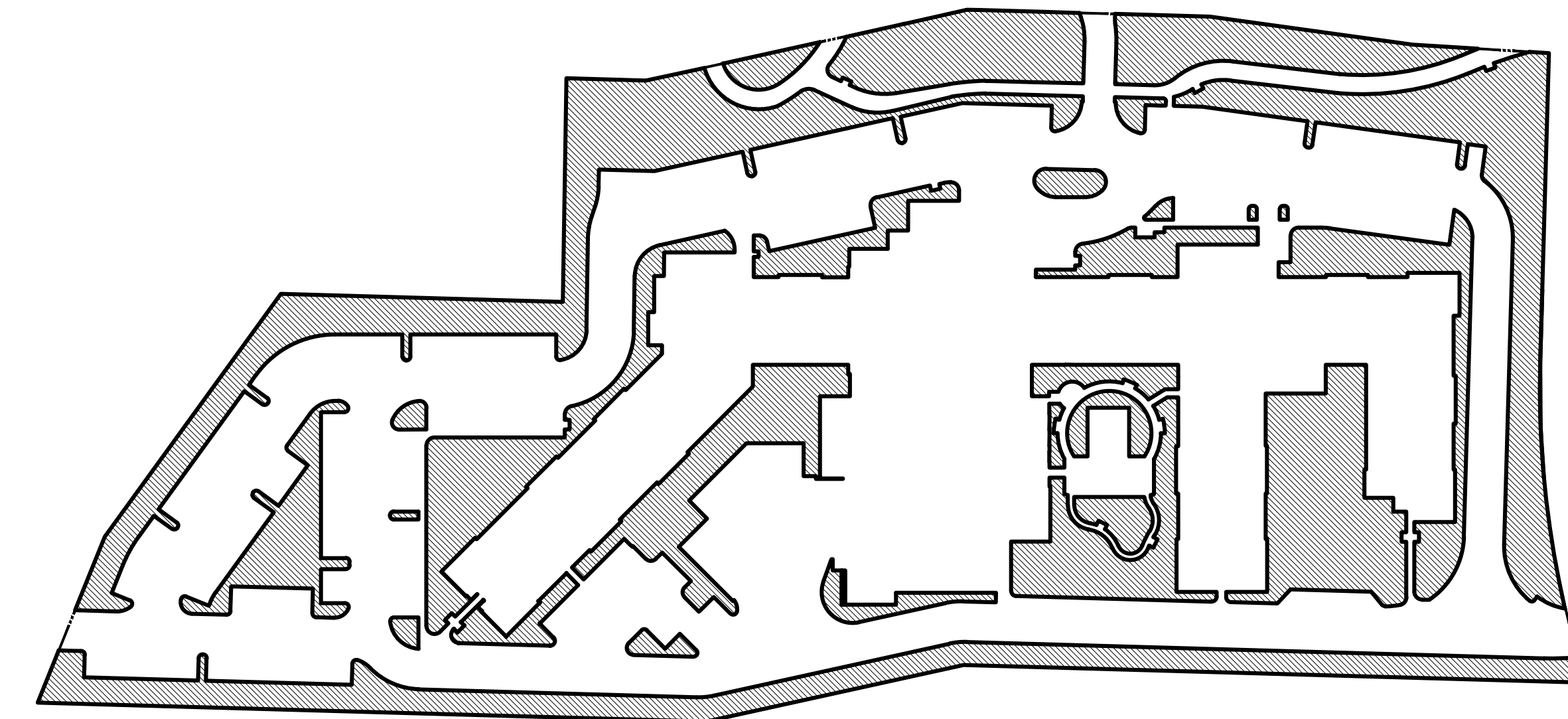
PROPERTY BOUNDARY
318,460.4 S.F.



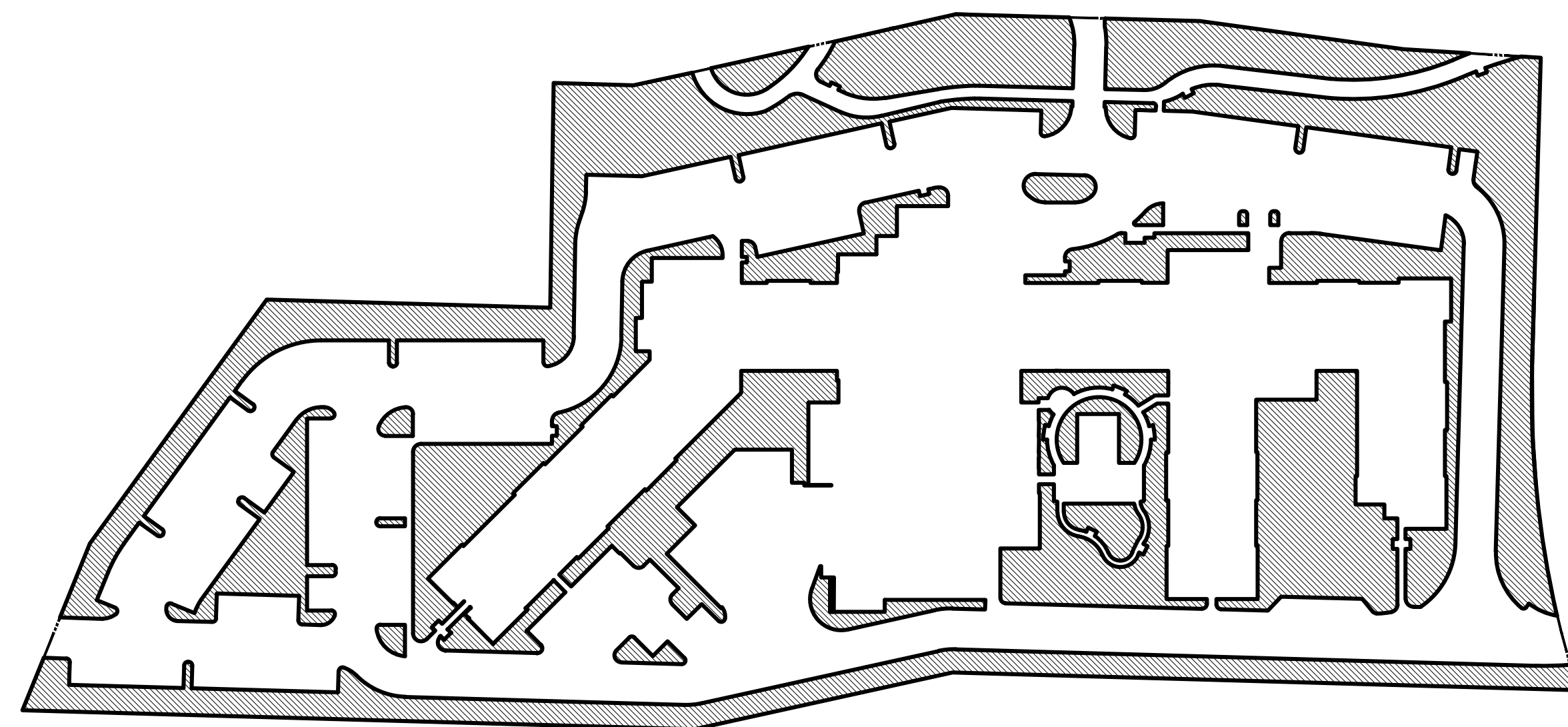
IMPERVIOUS AREA
205,050 S.F.



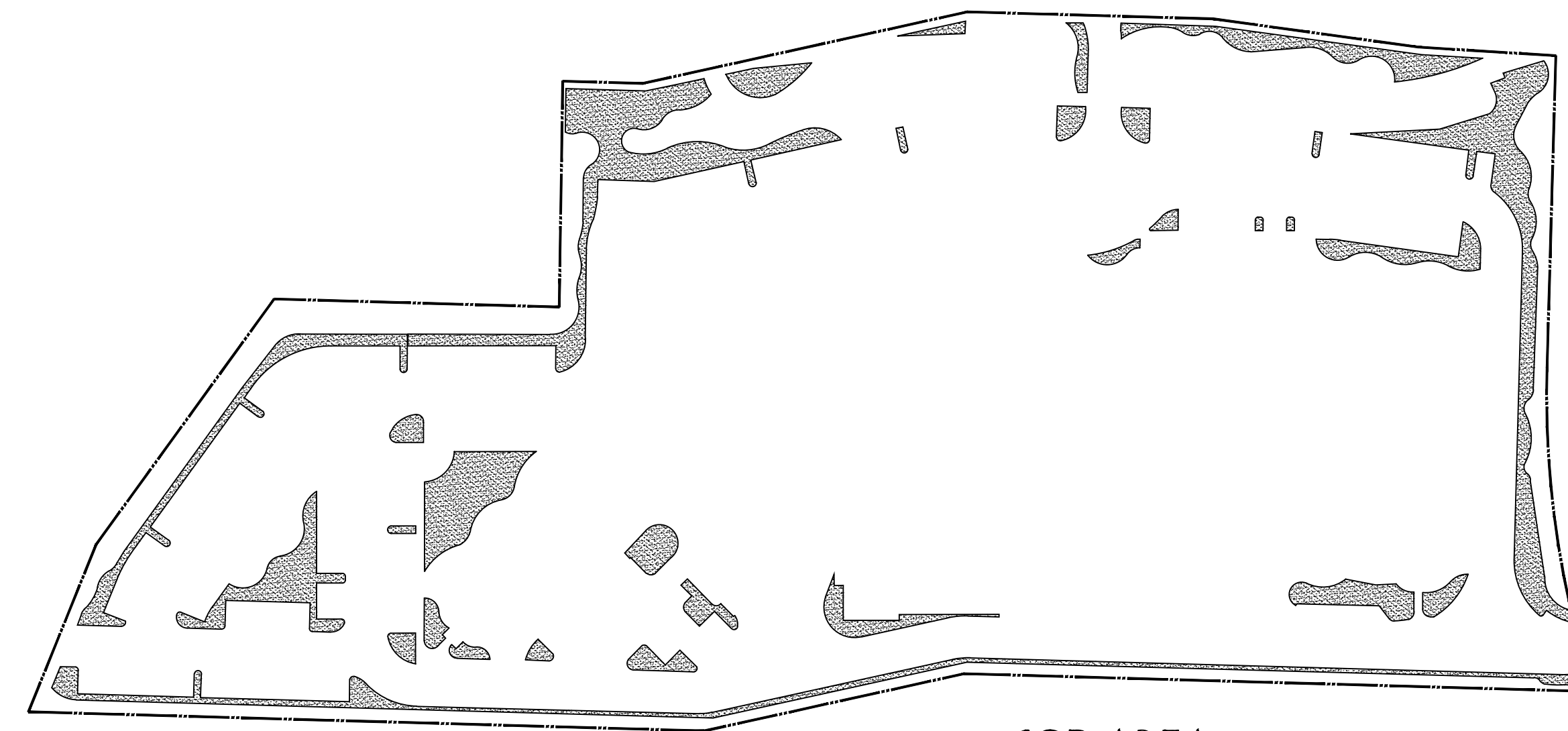
PERVIOUS AREA
113,410.04 S.F.



OPEN SPACE AREA
113,410.04 S.F.



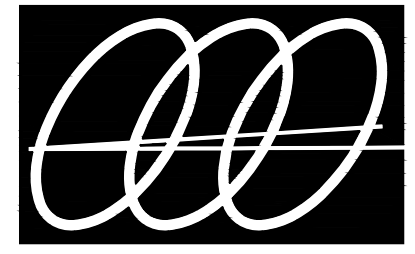
OPEN SPACE FOR LANDSCAPE POINTS
113,410.04 S.F.



SOD AREA
31,606 S.F.

FILE: N:\BALLLEN\ISSUES\WEST_TO\0\0\DRAWINGS\CURRENT\URD SUBMITTAL\ENCOMPASS OPEN SPACE PLANDWG
PLOTTED: 2/17/22 AT 5:02PM BY: BEN
XREFS

© Copyright 2018 All Rights Reserved



Gentile Glas
Holloway
O'Mahoney
& Associates, Inc.
Landscape Architects
Planners
Environmental Consultants

1907 Commerce Lane
Suite 101
Jupiter, Florida 33458
561-575-9557
561-575-5260 FAX
www.2GHO.com

Open Space Plan
Encompass Health
Palm Beach Gardens, Florida

Designed: GGG/BBP
Drawn: BBP
Approved: GGG/EOM/MIH
Date: 09/09/21
Job no: 20-0000
Revisions: 01/31/22
02/18/22

Seal

LC 0000111
Sheet Title:

Open
Space
Plan

Scale: N.T.S.

Sheet No.

OSP-1

13-0000